

Better Homes and Gardens.

Best BBQ
Side
Dishes P.172

JUNE 2010 BHG.COM \$3.99

It's better outside!

the summer life

15 Delicious
Grill Recipes
Plus a Prize
BBQ Sandwich

5 Fresh Ways
to Make an
Average Deck
Live Big

40 Fun Ideas
for Summer
Get-Togethers

6 Colorful Ideas
for Carefree Style

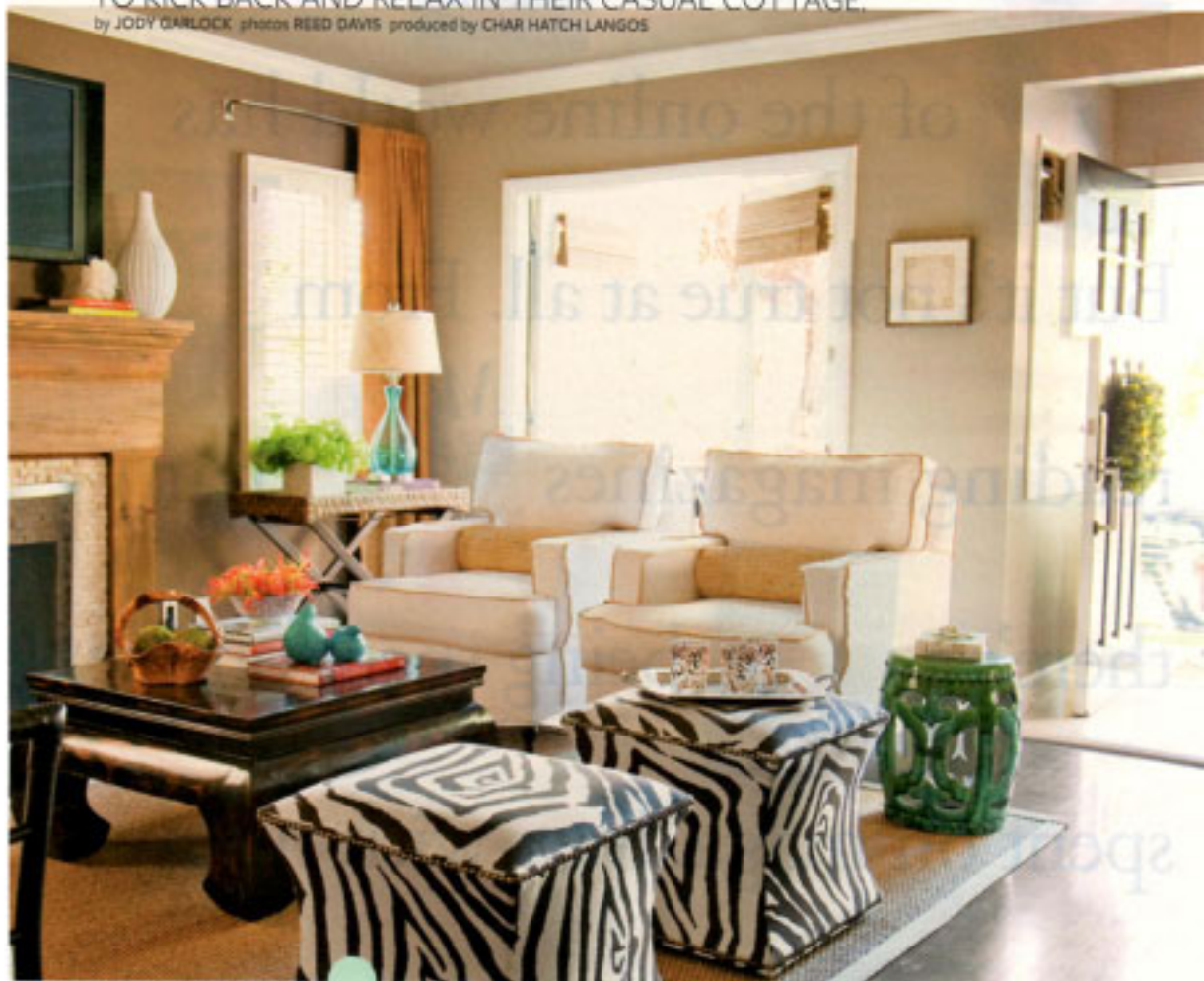


Grilled Chicken with
Watermelon Glaze P.204

breathing rooms

A FAMILY OF FIVE WELCOME FRIENDS AND NEIGHBORS TO KICK BACK AND RELAX IN THEIR CASUAL COTTAGE.

by JODY GARLOCK photos REED DAVIS produced by CHAR HATCH LANGOS



Jill Soderlund remembers feeling a special pull when she first drove by the 1950s California cottage that's now her family's home. "It just looked so warm and inviting," she says. Her initial reaction was telling. In the five years the Soderlunds have lived there, the 1,800-square-foot home has become a social hub. Neighbors come through the side gate in the evenings to chat with Jill and her husband, Clark, on the patio. Inside, the compact yet open layout gives the couple and their kids, Sophia and twins William and Audrey, lots of together time. And from the kitchen, Jill "sees the world unfolding" through the big windows and French doors on the front of the home.

Sur La Mer Design's Blue Glass Meena Lamp \$225



"Our house is a 'cool' place, but casual," says homeowner Jill Soderlund. The patio, this page, with a new fireplace, is a favorite gathering spot. On weekends, the family eats dinner at the living room coffee table, opposite. "I remember doing that as a kid and it brings me peace," Jill says. Ottomans extend seating options for guests. "For a small room, it's really flexible."



Creating spaces for the family to be together topped Jill's list when the couple renovated the house. They chose yard space over an addition, then removed a wall so the kitchen, living room, and dining area were one large space. "It changed the whole feel and function of the home," says Jill, an interior designer who credits her architect father with the idea. "I used to have to go around the kitchen wall to check on three little kids in the living room." Now she sees it all—kids coloring at the dining table, Clark reading in the living room, friends sitting at the new island, and neighbors walking by outside.

Outdoors, the backyard patio is the couple's pride. "It's our second living and dining room," Jill says. A big teak table is always decorated for the season, and chairs by the new fireplace are draped with throws so friends can stay warm on cool nights. "There's a lot of outdoor living at our place," Jill says.

And there's a lot of living—inside and out—packed into just the right amount of space. "I don't long to have more or change more," Jill says. "This feels the way the house was meant to be."

continued on page 75

"It's the hub of our lives," Jill says of the new kitchen island, above. "I am in love with that little island."

Double doors make the front entrance seem grander, right. Jill uses the outdoor sitting area to the right as spillover space when entertaining; she sometimes sets up a beverage table and puts a small sofa here.

The banquette, opposite, gives the family an additional lounging spot. "It's like a sofa," Jill says. "And it's great for birthday parties. I can get maybe 11 kids at this table. They all jockey for the cushions, except Audrey, who always gets the orange 'queen's seat.'"



“You know that idea of a formal dining room or ‘Mom’s’
living room? I don’t have the square footage for that mentality.
We use every inch of every room.” JILL SODERLUND

